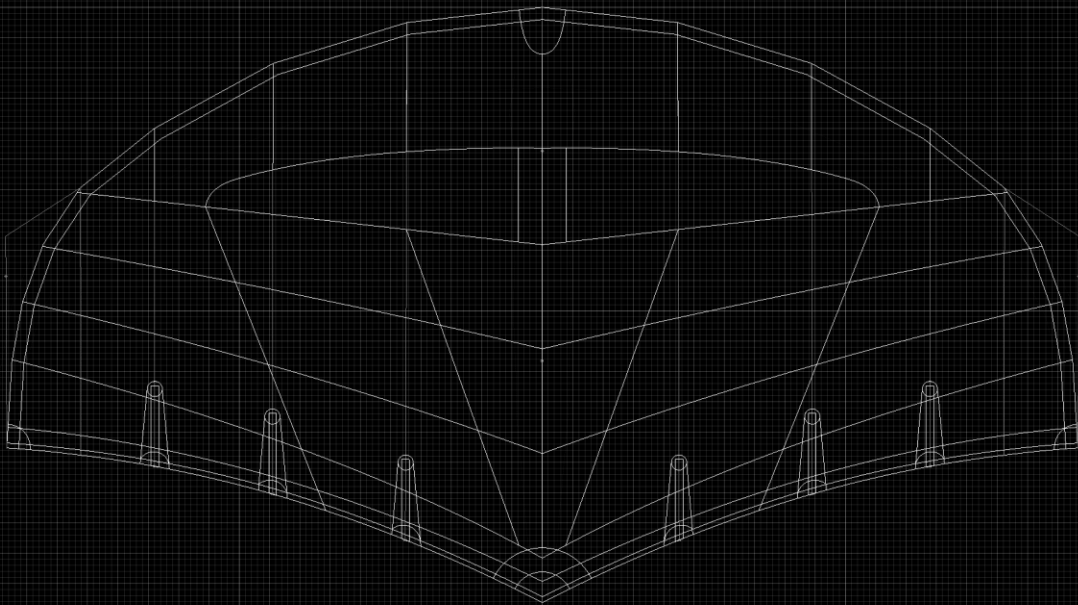


VAYU

WING MANUAL | USER GUIDE



CONTENT

1.	WARNINGS	3
2.	SAFETY & PRECAUTIONS	4
3.	WING OVERVIEW & WING SIZE	5
4.	HANDLE REMOVAL & BOOM MOUNTING	7
5.	INFLATING	9
6.	DEFLATING & PACKING UP	10
7.	CARE & MAINTENANCE	11
8.	WARRANTY	12

1. WARNINGS

ASSUMPTION OF RISK | Use of the VAYU Product and its components involves certain risks of bodily injury or death to the user of this product or to third parties. By using the VAYU product, you agree to assume and accept all known and unknown, probable and improbable risks of injury. The risks inherent in the practice of this sport can be reduced by observing the warnings in this manual and exercising due care in each individual case. The risks inherent in this sport can be reduced to a large extent by following both the warning guidelines listed in this manual and common sense.

RELEASE AND WAIVER OF CLAIMS | In consideration for your use of this product, you hereby agree to the following to the fullest extent permitted by law: You waive any and all claims you have or may have in the future against VAYU Sports UG or any of its representatives arising out of the use of this product and its components. Release VAYU Sports UG or any of its representatives from any and all liability for any loss, damage, injury or expense that you or any other user of this product or your next of kin may suffer as a result of the use of this product due to any cause whatsoever, including negligence or breach of contract on the part of VAYU Sports UG or any of its representatives in the design or manufacture of this product.

BINDING EFFECT OF AGREEMENT | In the event of your death or incapacity, this Agreement shall be effective and binding upon your heirs, next of kin, executors, administrators, associates and representatives.

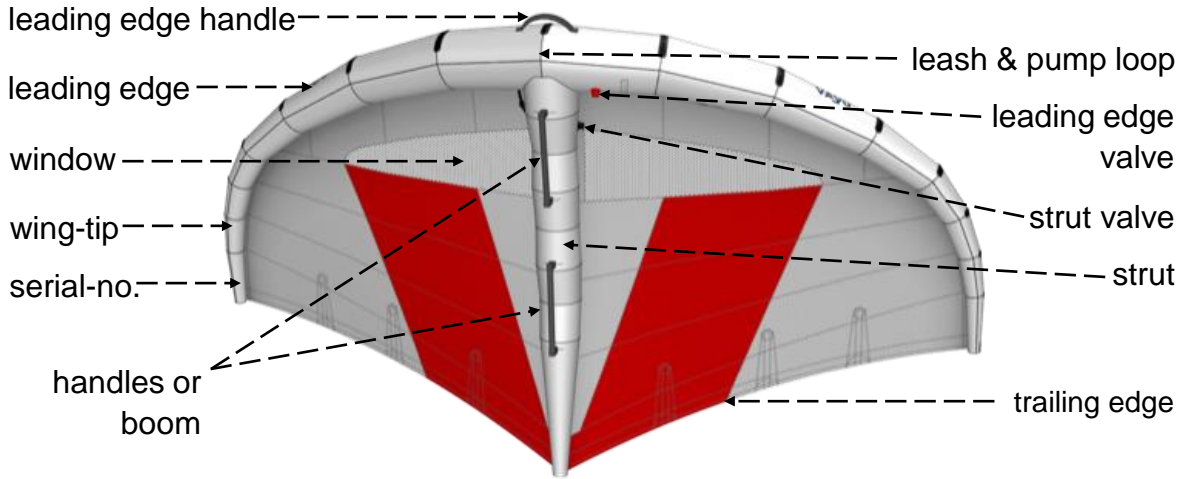
ENTIRE AGREEMENT | In entering into this Agreement, you are not relying upon any oral or written representations other than what is set forth in this agreement and User's Guide.

2. SAFETY & PRECAUTIONS

WINGSURFING CAN BE DANGEROUS | Use of this product exposes the user to unexpected and unavoidable risks, hazards and dangers. Always use extreme caution when using this product. Read these operating instructions carefully and keep it for future reference!

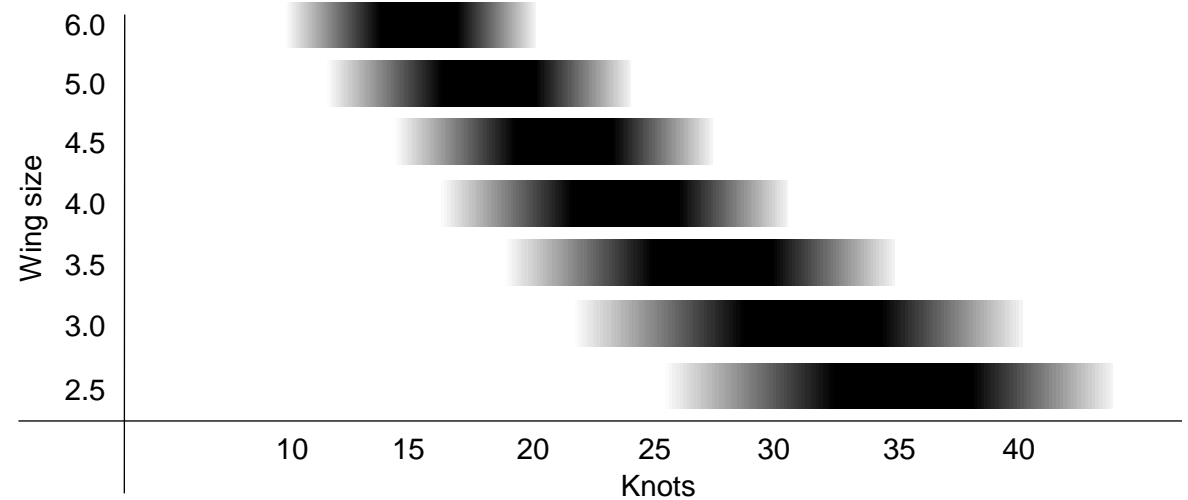
- get professional instruction when learning to wingsurf
- only wingsurf if you are in good physical and mental condition
- only wingsurf if you wear a life jacket and helmet
- VAYU wings and boards should only be used on the water
- before wingsurfing, make sure you are familiar with your VAYU equipment
- never use the wing and the board without a leash
- always use the appropriate wing size for your skill level and wind conditions (any wind range given is for orientation purposes only and is not binding)
- when wingsurfing, you are responsible for both your safety and the safety of others
- before you wingsurf check the weather report as well as the locals for the prevailing weather conditions
- never go wingsurfing during a thunderstorm or lightning storm
- always keep a distance of 100 m from obstacles
- use only wingsurfing spots that suit your skills and always respect the weather conditions and local rules
- do not wingsurf at places where uninvolved third parties might get injured
- the inflated wing must be secured when not in use, e.g. by the wingboard, as the wing can fly away and injure or in extreme cases even kill persons

3. WING OVERVIEW & WING SIZE



CHOOSING THE CORRECT WING SIZE | The wind range is given in knots (knt), the size of the wing in square meters (sqm). The wind range should serve you as an indicator and is based on a rider weight of 80 kilograms. It varies depending on following factors:

- A) WINGFOIL SKILLS | The better your riding skills are, the more you will be able to extend the wind range of the wing.
- B) RIDER'S WEIGHT | The heavier you are, the more wind you will be able to handle with the wing.
- C) BOARD & FOIL | The type of board and its volume, as well as the size and shape of the foil used also affect the wind range.



Bft	Knots	Seaman's term	Land conditions
0	0 – <1	Calm	Calm, Smoke rises vertically
1	1 – 3	Light air	Direction shown by smoke drift
2	4 – 6	Light breeze	Wind felt on face, leaves rustle
3	7 – 10	Gentle breeze	Leaves and small twigs moving
4	11 – 15	Moderate breeze	Small tree branches move
5	16 – 21	Fresh breeze	Small trees in leaf begin to sway
6	22 – 27	Strong breeze	Larger tree branches moving
7	28 – 33	Moderate gale	Whole trees moving
8	34 – 40	Gale	Twigs breaking off trees

4. HANDLE REMOVAL & BOOM MOUNTING (AURA II)



1 Place the wing uninflated.



2 Loosen the outer screw (M5x14mm) at all ends of the handles.



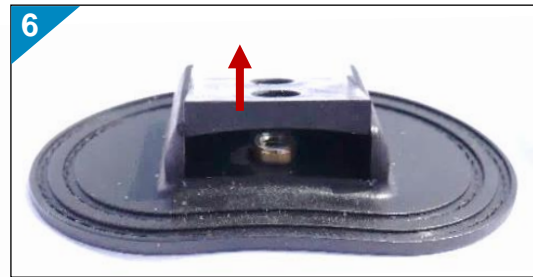
3 Remove the finger-protection at all ends of the handles.



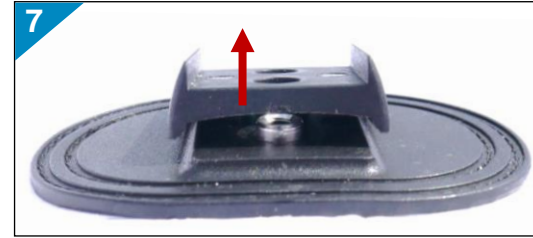
4 Loosen the inner screw (M5x12mm) at all ends of the handles.



5 Remove both handles.



6 Unplug the handle-spacer without side panel at both outer attachment points.



7 Unplug the handle-spacer with side panel at both inner attachment points.



8 Attach the boom-spacer at both outer attachment points. The arrows on the spacers must face each other!



9 Attach the nut-closer at both inner attachment points.



10 Mount the boom and tighten the inner screw (M5x18mm) at both ends of the boom.



11 Mount the finger-protection at both ends of the boom.

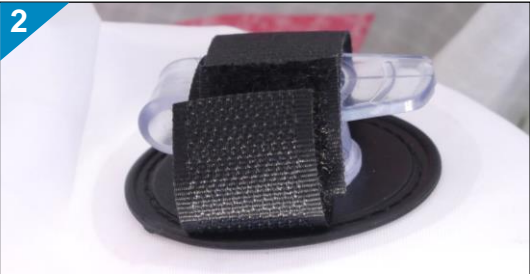


12 Tighten the outer screw (M5x18mm) at both ends of the boom.

5. INFLATING



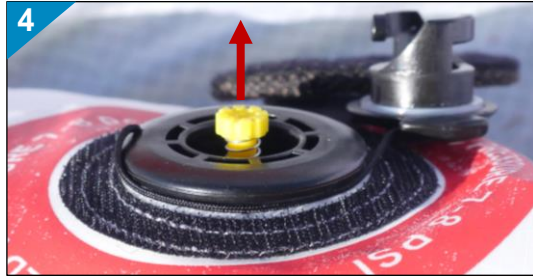
1 Place the secured wing with the leading edge facing windward and the strut upward.



2 Close the valve of the strut.



3 Open the valve cover and turn the cap to open the leading edge valve.



4 Rotate the yellow valve stem 90° to the upper position.

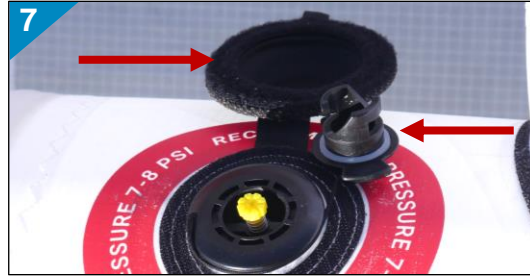


5 Turn the pump hose into the valve. Pump to the recommended value.

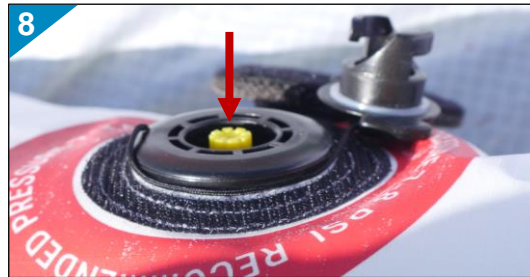


6 Close the valve by replacing the cap and the valve cover.

6. DEFLATING & PACKING UP



7 Open the valve cover and turn the cap to open the leading edge valve.



8 To deflate, press and turn the yellow valve stem 90° to the lower position.



9 Open the valve of the strut to deflate faster.



10 Roll the wing from both wingtips.



11 Fold the wing between the handles before placing it in the bag.



12 Fold the leading and trailing edges toward each other and roll up the wing from the wingtips before placing it in the extended bag.

HANDLE - SETUP

BOOM - SETUP

7. CARE & MAINTENANCE

- Always pump the wing with the intended inflation pressure, which is shown on the side of the valve. Use a manual pump with a pressure gauge.
- If the bladder does not fill uniformly with air, or if there is a visible twist in the strut or leading edge, interrupt the pumping process. In this case, check that the bladder is properly seated before re-inflating the wing.
- Keep sand and water away from the pump and the valves of the wing.
- On land, lay the wing upside down with the strut facing up.
- Avoid exposing the wing to the wind and sun for an unnecessarily long time after or before use. The fluttering of the canopy in the wind and excessive UV exposure can reduce the life of the wing.
- Avoid bringing the wing into contact with sharp-edged rocks, thorns, wood and other objects that may damage, puncture or tear the cloth.
- Be sure not to drag the tips of the wing across the ground.
- Never leave the wing unattended on the beach and secure it with the leash to a heavy and/or immovable object.
- Be sure that the wing has dried completely before packing it up. Otherwise changes of color or mildew could occur. Such bleeding is not covered under the VAYU warranty.
- Do not dry the wing in direct sun.
- Pack up the wing into the bag without cuttings to avoid tearing the canopy.
- A coating that results from using the wing in salt water will not damage the wing. However, rinsing in fresh water and drying is recommended.
- When cleaning the wing be sure that no water, dirt, or sand gets inside the bladders.
- Inspect the cloth, struts and leading edge at regular intervals and repair any small holes or tears before the next use, to avoid major damage.

8. WARRANTY

VAYU warrants this product to be free of major defects in material or workmanship to the original purchaser for a period of six months from the original date of purchase. This warranty is subject to the following limitations: The warranty is valid only when the product is used for wingfoiling on water and does not cover products used in rental or teaching operations.

VAYU will make the final warranty determination, which may require inspection and/or photos of the equipment, which clearly show the defect(s). If necessary, this information must be sent to the VAYU distributor in your country, postage prepaid. If a product is deemed to be defective by VAYU, the warranty covers the repair or replacement of the defective product only.

VAYU will not be responsible for any costs, losses or damages incurred as a result of loss of use of this product. The warranty does not cover damage caused by misuse, abuse, neglect or normal wear and tear including but not limited to, rigging with other than VAYU components, damage due to excessive sun exposure, damage caused by improper handling or storage, damage caused by use in the waves or shore break and damage caused by anything other than defects in material and workmanship.

This warranty expires if any unauthorized repair, change or modification has been made to any part of the equipment. The warranty for any repaired or replaced equipment is valid as of the date of the original purchase only. The original purchase receipt must accompany all warranty claims. The name of the retailer and date of purchase must be clear and legible. There are no warranties that extend beyond the warranty specified herein.

VAYU

ANY QUESTIONS ? | Contact our Team

Telephone: +49 (0) 4313890790

Telefax: +49 (0) 431 3890790

E-Mail: hello@vayu.world

24159 Kiel

Koppelberg 4 – 6

GERMANY

